

HIMURO PROPERTY

934 Kapahulu Avenue
Honolulu, Hawaii 96816

Office Space

HAWAII REALTY MANAGEMENT CORPORATION

*A Property Management
Company*

2745 South King Street
Honolulu, Hawaii 96826

Phone: (808) 941-2948

Fax: (808) 440-4553

Email:

info@hawaiiirealtymanagement.com

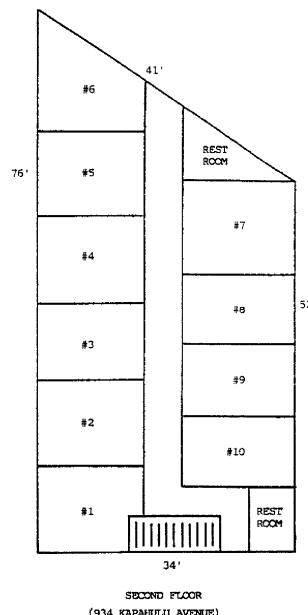
Contact:

Steven M. Costello (B)

Property Manager

Disclaimer:

The information contained herein has been obtained from sources believed reliable. While we know of no reason to doubt its accuracy, we make no guarantee, warranty or representation about it. It is your responsibility to independently confirm its accuracy and completeness. You and your advisors should conduct a careful independent investigation of the property to determine to your satisfaction the suitability of the property for your needs. The property may be withdrawn at any time without prior notice. No sub-agency is offered.



If you require a small office space; if you need to control your costs; if you would prefer a month-to-month occupancy, we may have the space that will satisfy your requirements.

We have one small office bay available. Each bay is approximately 144 usable square feet (approximately 13' 10" x 10' 5").

Conveniently located on Kapahulu Avenue.

Across from Leonard's Bakery.

- 934 Kapahulu Ave #7
- 2nd floor office space.
- Gross Rent: \$200/mo
- Excess energy charged for AC and/or lots of business equipment.
- Lease Terms: M-T-M or 6-months lease agreement.
- Zoning: B-2
- TMK: (1) 2-7-31-15
- Parking: No onsite parking
- Features: Convenient location, flexible terms.
- Hours: Mon–Sat, 7AM–6PM